

Cwm Taf Morgannwg Safeguarding Board

Induction Pack

| | | |
|--------------------------------------|--------------------------------|---------------------------|
| Cwm Taf Morgannwg Safeguarding Board | Date: January 2023 | Status: Final version |
| Author: CTMSB Business Unit | Previous version: January 2022 | Review Date: January 2024 |

| Contents | Page |
|--|------|
| Introduction | 3 |
| CMTSB's Vision | 3 |
| Annual Plan | 3 |
| Annual Report | 3 |
| Communications Mission Statement | 4 |
| Learning and Improvement Framework | 4 |
| Privacy Policy | 4 |
| What does Safeguarding in Cwm Taf Morgannwg look like? | 5 |
| The Multi-Agency Safeguarding Hub (MASH) | 5 |
| CTMSB Membership | 6-8 |
| Structure and Sub-Groups of the CTMSB | 9-12 |
| The Business Unit | 13 |

INTRODUCTION

The Cwm Taf Morgannwg Safeguarding Board (CTMSB) is a statutory partnership made up of the agencies that are responsible for safeguarding children and adults at risk in the Cwm Taf Morgannwg area. The Board ensures that agencies in the region have effective arrangements in place to ensure that people of all ages, living in the region, are protected from abuse, neglect or other kinds of harm. This also involves preventing abuse, neglect or other kinds of harm from happening.

The Cwm Taf Morgannwg Safeguarding Board (CTMSB) operates within the statutory guidance set out under Part 7 of the Social Services and Wellbeing (Wales) Act 2014 and in exercising its functions under the Act, the CTMSB will have due regard to the United Nations Principles for Older Persons, the United Nations Convention on the Rights of the Child and the United Nations Convention on the Rights of Persons with Disabilities.

The CTMSB monitors how well agencies and other partnerships undertake their work with regard to safeguarding children, young people and adults at risk and ensures safeguarding is embedded in all working practices.

Cwm Taf Morgannwg covers the local authority areas of Bridgend, Merthyr Tydfil and Rhondda Cynon Taf (RCT), covering a population of around 500,000.

Our Vision

To ensure that children, young people and adults in Cwm Taf Morgannwg are protected from abuse, neglect or other kinds of harm and are prevented from becoming at risk of abuse, neglect or other kinds of harm. The Board will engage with, listen to and hear the views of children, young people and adults.

Annual Plan

The CTMSB's Annual Plan identifies what the Board will be focusing on during the forthcoming year, in pursuit of its aim to ensure that the people of Cwm Taf Morgannwg are safeguarded from abuse, neglect or other forms of harm.

To view the Annual Plan for 2022/23, please select this [link](#).

Annual Report

The CTMSB's Annual Report presents an overview of the work that the Cwm Taf Morgannwg Safeguarding Board carried out in 2020/2021 in pursuit of our aim to ensure that the people of Cwm Taf Morgannwg are safeguarded from abuse, neglect or other forms of harm.

To view the Annual Report for 2021/22, please select this [link](#).

Communications Mission Statement

The Safeguarding Board has a Communications Mission Statement which sets out how it intends to communicate with our communities and involve children, young people and adults in the work of the Board.

To view, the Mission Statement, please select this [link](#).

Learning and Improvement Framework

The Safeguarding Board's Learning and Improvement demonstrates how learning will be identified, disseminated and implemented in practice within in order to improve outcomes for children, young people and adults within Cwm Taf Morgannwg.

The Framework recognises that Board partner agencies have their own internal governance and learning structures and therefore, seeks to complement and build on current single agency arrangements by adding a multi-agency approach to support partner agencies to learn lessons from a range of functions and reviews and to use this learning to improve joint working.

Privacy Policy

As the Safeguarding Board collects and uses personal information, a Policy is available that outlines how this information is used and who it is shared with. To view this Policy, please select this [link](#).

What does Safeguarding in Cwm Taf Morgannwg look like?

Safeguarding in Cwm Taf Morgannwg is overseen by the regional multi-agency Cwm Taf Morgannwg Safeguarding Board with responsibility for:

- Safeguarding Adults
- Safeguarding Children
- The Multi-Agency Safeguarding Hubs (MASH)

Safeguarding involves both the protection of children and adults at risk from abuse, neglect or other kinds of harm and preventing them from becoming at risk of abuse, neglect or other kinds of harm.

A child is defined by the children's act 1989 as anyone less than 18 years of age. A '*child at risk*' is defined in the Social Services and Wellbeing Act (Wales) Act 2014 as a child who:

- is experiencing or is at risk of abuse, neglect or other kinds of harm; and
- has needs for care and support (whether or not the local authority is meeting any of those needs).

An '*adult at risk*' is defined in the Social Services and Wellbeing Act (Wales) 2014 as an adult who:

- is experiencing or is at risk of abuse or neglect;
- has needs for care and support (whether or not the Local Authority is meeting any of those needs); and
- as a result of those needs is unable to protect himself or herself against abuse or neglect or the risk of it.

Abuse means physical, sexual, psychological, emotional or financial abuse. Financial abuse includes:

- having money or other property stolen;
- being defrauded;
- being put under pressure in relation to money or other property;
- having money or other property misused.

Neglect means a failure to meet a person's basic physical, emotional, social or psychological needs, which is likely to result in an impairment of the person's well-being.

The responsibilities and functions of the Board are set out in the statutory guidance under Part 7 of the Social Services and Wellbeing (Wales) Act 2014. It has an overall responsibility for challenging relevant agencies so that:

- There are effective measures in place to protect children and adults at risk who are experiencing harm or who may be at risk as the result of abuse, neglect or other kinds of harm; and
- There is effective inter-agency co-operation in planning and delivering protection services and in sharing information.

The Multi-Agency Safeguarding Hubs (MASH)

The Cwm Taf Multi-Agency Safeguarding Hub (MASH) is the principle point of contact for all professionals to report safeguarding concerns, across Cwm Taf.

The Bridgend Multi-Agency Safeguarding Hub (MASH) is the principle point of contact for all professionals to report safeguarding concerns, across Bridgend.

Both have significantly improved the sharing of information between agencies, helping to protect the most vulnerable children and adults from harm, neglect and abuse.

The Hubs directly receive safeguarding concerns from professionals such as teachers and doctors; as well as members of the public and family members via Rhondda Cynon Taf CBC, Merthyr Tydfil CBC and Bridgend contact centres.

A Cwm Taf Morgannwg MASH Quality Assurance and Performance (MAQAP) Group oversees the ongoing development of the Cwm Taf MASH and Bridgend MASH to ensure it continues to achieve its goal to improve safeguarding and promote the welfare of children, young people and adults at risk.

Cwm Taf Morgannwg Safeguarding Board Membership

The Lead Partner of the CTMSB is Rhondda Cynon Taf (RCT) County Borough Council. The CTMSB is chaired by the Director of Social Services for Merthyr Tydfil, Lisa Curtis-Jones.

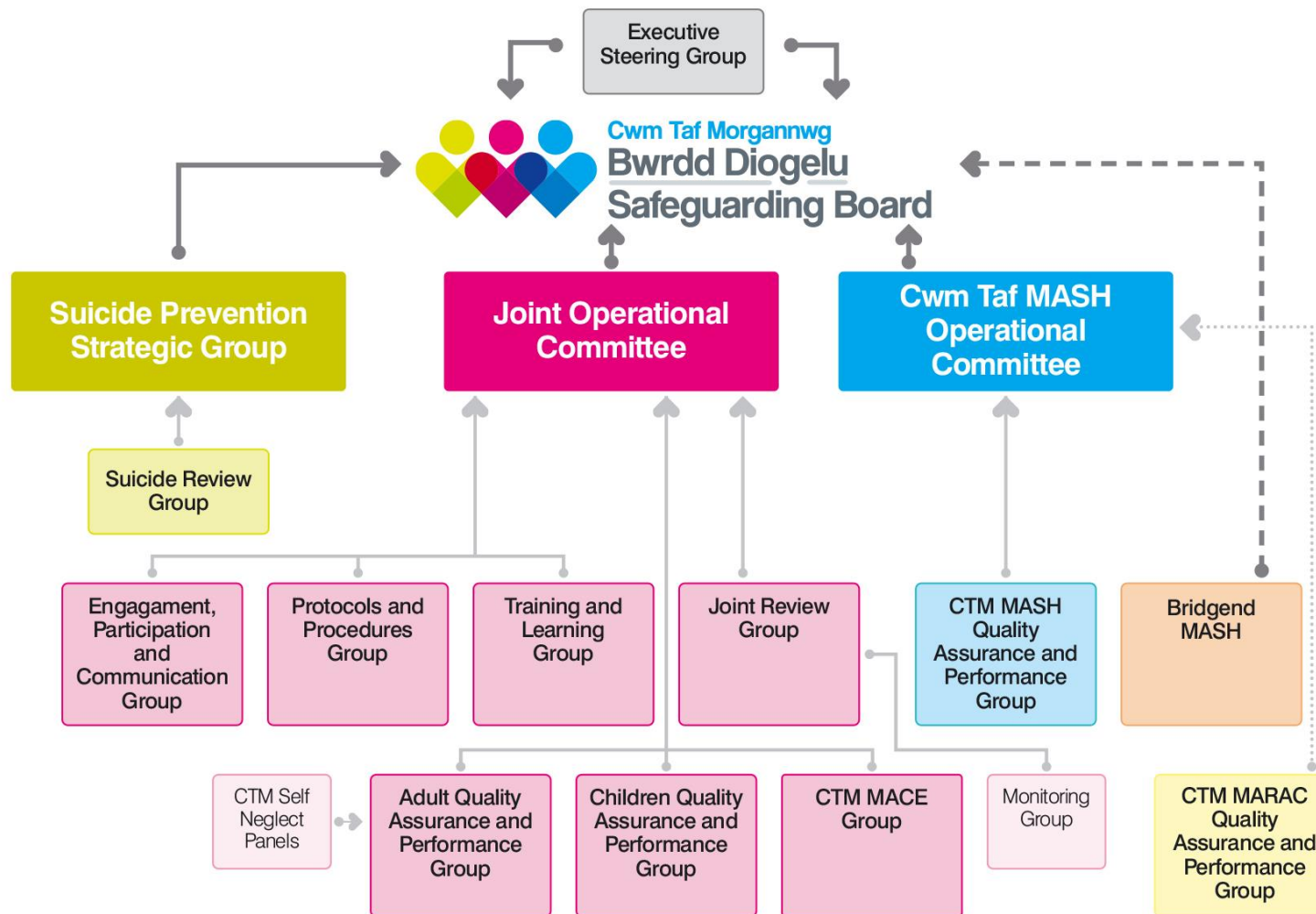
The membership of the Board is as follows:

| NAME | TITLE | AGENCY |
|------------------------------|---|---|
| Lisa Curtis-Jones (Chair) | Director of Social Services | Merthyr Tydfil County Borough Council |
| Claire Marchant (Vice Chair) | Director of Social Services and Wellbeing | Bridgend County Borough Council |
| Neil Elliott (Chair of JOC) | Director of Community and Children's Services | Rhondda Cynon Taf County Borough Council |
| Jackie Neale | Adult Safeguarding Service Manager | Rhondda Cynon Taf County Borough Council |
| Louise Davies | Director, Public Health | Rhondda Cynon Taf County Borough Council |
| Colette Limbrick | Interim Head of Safeguarding (Children) | Rhondda Cynon Taf County Borough Council |
| Gaynor Davies | Director of Education and Lifelong Learning | Rhondda Cynon Taf County Borough Council |
| Annabel Lloyd | Service Director, Children Services | Rhondda Cynon Taf County Borough Council |
| Cara Miles | Head of Legal - Community Care and Children | Rhondda Cynon Taf County Borough Council |
| Janet Wallsgrove | Prison Director | Parc Prison |
| Claire O'Keefe | Head of Safeguarding | Cwm Taf Morgannwg University Health Board |
| Matthew O'Baid | Named Doctor | Cwm Taf Morgannwg University Health Board |
| Richard Hughes | Deputy Executive Nurse Director | Cwm Taf Morgannwg University Health Board |
| Lyndon Lewis | Head of Service | Cwm Taf Youth Offending Service |
| Christa Bonham-Griffiths | Head of Service | Youth Justice Service, Bridgend |
| Donna Newell | Named Lead for Safeguarding | Public Health Wales |
| Virginia Hewitt | Designated Nurse (National Safeguarding Team) | Public Health Wales |
| Emma Richards | Head of Probation | Probation Service |

| | | |
|-------------------|---|---|
| Susan Walker | Chief Officer, Education | Merthyr Tydfil County Borough Council |
| Paul Lewis | Head of Public Protection | Merthyr Tydfil County Borough Council |
| Angela Edevane | Head of Adult Services | Merthyr Tydfil County Borough Council |
| Joe Rhys Jones | Interim Principal Safeguarding Manager | Merthyr Tydfil County Borough Council |
| Taryn Stephens | Head of Children Services | Merthyr Tydfil County Borough Council |
| Jacqueline Davies | Head of Adult Social Care | Bridgend County Borough Council |
| Laura Kinsey | Head of Children's Social Care | Bridgend County Borough Council |
| Nicola Echanis | Head of Education and Family Services | Bridgend County Borough Council |
| Raeanna Grainger | Group Manager | Bridgend County Borough Council |
| Martin Morgans | Head of Public Protection | Bridgend County Borough Council |
| Terri Warrilow | Head of Adult Safeguarding and Secure Estate | Bridgend County Borough Council |
| Marc Attwell | Superintendent | South Wales Police |
| Tracey Rankine | Head of Protecting Vulnerable Persons | South Wales Police |
| Nikki Harvey | Assistant Director Quality, Safety & Patient Experience | Welsh Ambulance Service Trust |
| Lin Slater | NISB Member | National Independent Safeguarding Board |

Structure and Sub-Groups of the Cwm Taf Morgannwg Safeguarding Board

The CTMSB has a sub-group structure in place to support the delivery of its objectives and to carry out its functions effectively. This enables the Board to focus on its overall responsibility of setting the strategic direction for its partner agencies and challenging them on the effectiveness of safeguarding measures.



The responsibilities of each sub-group are as follows:

Joint Operational Committee

The role of the Joint Operational Committee (JOC) is to support the Cwm Taf Morgannwg Safeguarding Board to deliver its objectives as set out in the statutory guidance set out in Part 7 of the Social Services and Wellbeing (Wales) Act 2014.

The Joint Operational Committee is responsible for the delivery of the Cwm Taf Morgannwg Safeguarding Board's Annual Plan. It will ensure that the priorities of the Board and the work of the sub-groups are delivered successfully. It will ensure that information about measuring outcomes and the effectiveness of the Board is produced and contained within the Annual Report.

Cwm Taf MASH Operational Committee

The Cwm Taf MASH Operational Committee (MOP) is responsible for the overall management of the MASH to ensure it continues to achieve its goal to improve safeguarding and promote the welfare of children and adults at risk.

The MOP will receive reports from the MASH Quality Assurance Group (MAQA) on performance and learning from audits. It will also make decisions on any risks/issues escalated from the MAQA and refer up to the Regional Safeguarding Board as appropriate, any areas of concern that are beyond its remit.

Suicide Prevention Strategic Group

The Suicide Prevention Strategic Group (SPSG) is a cross-partnership steering group that sits under the Cwm Taf Morgannwg Safeguarding Board, the Community Safety Partnerships and the Together for Mental Health Partnership.

The SPSG will support the Prevention of Suicide and Self Harm agenda across the region by overseeing a single multi-agency strategy that delivers the objectives of the Talk to Me 2 strategy for the Cwm Taf Morgannwg region.

Suicide Review Group

The Suicide Review Group supports the Prevention of Suicide and Self Harm agenda across the region by receiving and analysing data and information in relation to completed and suspected suicides with an aim to support improvements in policies, systems and practice. The group will focus on learning from the experience of its professionals across the agencies involved in these cases.

Executive Steering Group

The Executive Steering Group brings together the six statutory partners of the Cwm Taf Morgannwg Safeguarding Board to address and take accountability for critical areas of concern and/or risk on behalf of the Board, to enable timely decision-making and action.

Cwm Taf Morgannwg MASH Quality Assurance Sub-Group

The Cwm Taf Morgannwg MASH Quality Assurance Sub-Group (MQAP) supports the ongoing development of the MASH to ensure it continues to achieve its goal to improve safeguarding and promote the welfare of children, young people and adults at risk. This is done through reviewing the efficacy of MASH Safeguarding Measures, undertaking audits, reviews and investigations and reviewing performance.

Joint Review Group

The Joint Review Group for the Cwm Taf Morgannwg Safeguarding Board (CTMSB) will ensure that the CTMSB discharges its functions in relation to Adult and Child Practice Reviews as set out in the statutory guidance.

Monitoring Group

The Monitoring Group, in conjunction with the CTMSB's Joint Review Group will ensure that the CTMSB discharges its functions in relation to Adult and Child Practice Reviews.

Children's Quality Assurance and Performance Group

The Children's Quality Assurance and Standards Group for Cwm Taf Morgannwg Safeguarding Board will monitor, audit and quality assure the effectiveness of local organisations' and individuals' work to safeguard and promote the welfare of children across Cwm Taf Morgannwg.

Cwm Taf Morgannwg MACE Group

The Multi Agency Child Exploitation Group (MACE) has been established to bring together key agencies in order to effectively address the causes of Child I Exploitation . It will monitor the response to risk posed to children, by understanding and recognising current and emerging trends whilst acknowledging risk posed by certain geographical areas and by identified offenders. The MACE will also review existing disruption plans and hold agencies to account for delivery of actions to minimise risk.

Engagement, Participation and Communications Group (EPC)

The Engagement, Participation and Communication Sub-Group (EPC) will, on behalf of the CTMSB, bring together representatives from partner organisations to ensure that there are clear processes for the identification of engagement and participation needs. These will feed into the planning, commissioning and evaluation of multi- agency work to ensure it is consistently meeting local need.

The EPC will also ensure that there are effective mechanisms in place for information sharing and good practice. This will include awareness raising and the strategic co-ordination of public engagement activity, consulting with children, young people and adults at risk, their carers and professionals on matters relating to safeguarding.

Protocols and Procedures Group (PPG)

The Protocol and Procedures Group (PPG) for adults and children will, on behalf of the Cwm Taf Morgannwg Safeguarding Boards (CTMSB), ensure that there is a clear process in place for the development and authorisation of protocols and procedures to safeguard children and adults at risk.

This supports the All Wales Child Protection Procedures 2008 and the All Wales Interim Policy and Procedures for the Protection of Vulnerable Adults of Abuse 2013.

Current Policies and Procedures can be accessed by clicking the topic below:

- [Children](#)
- [Adults](#)
- [Joint](#)

Adults Quality Assurance and Performance Group

The Adults Quality Assurance and Performance Group (AQAP) will, on behalf of the CTMSB, fulfil general functions to attain the following objectives:

- To foster a relationship of mutual trust and partnership working amongst the agencies represented on the CTMSB in relation to safeguarding and promoting the welfare of Adults at Risk within the Cwm Taf Morgannwg region.
- To safeguard and promote the welfare of Adults at Risk by providing information to CTMSB and practitioners about how this might be achieved, through the quality assurance function.

Training and Learning Group (TALG)

The Training and Learning Group have responsibility for reviewing the training needs of practitioners and ensure that information about best practice and learning arising from reviews is disseminated. The TALG will also facilitate research into protection from, and prevention of, abuse and neglect of children and adults at risk of harm.

The current training calendar for the CTMSB can be accessed [here](#).

Cwm Taf Morgannwg Self-Neglect Panels

There is a Self-Neglect Panel for RCT, Bridgend and Merthyr Tydfil. The purpose of the panels is to consider the risk(s) associated with individuals discussed within the referral and, dependent on the presenting problems, determine the most appropriate agency to lead on the multi-agency response.

The Panels will formulate an agreed joint action plan that will have been approved by the Panel partner agencies in order to provide support and guidance for the individuals discussed within the referral.

The Business Unit

The Business Unit supports the Safeguarding Board to deliver its safeguarding responsibilities. The team drives forward the day-to-day business in relation to the Board's core functions and provides administrative and organisational support for activities associated with the Board's subgroups.

The Unit is the central point of co-ordination for the work of the Board and is responsible for the website www.ctmsb.co.uk

Contact details are as follows:

ctmsafeguarding@rctcbc.gov.uk
01443 490122

| | | |
|--------------------------|---------------------------------------|--|
| Nikki Kingham | Business Manager | nikki.kingham@rctcbc.gov.uk |
| Beth Melhuish | Communications and Engagement Officer | bethmelhuish@rctcbc.gov.uk |
| Caroline Richards | MASH Coordinator | caroline.richards2@south-wales.pnn.police.uk |
| Leah Morgan | Business Coordinator | leah.morgan@rctcbc.gov.uk |
| Nichola Summerill | Business Coordinator | nichola.Summerill@rctcbc.gov.uk |
| Elise Robins | Business Support | elise.robins@rctcbc.gov.uk |
| Hannah Lewis | Business Support | hannah.lewis4@rctcbc.gov.uk |